

70 Series

70 Series



Overview

Sleeve actuated, instant 750 psi connection to custom external tube features

Product Family :	70 Series
Connection Type :	External Tube Feature
Connection Method :	Sleeve Actuated
Connects To :	Tube Feature
Pressure Rating :	750 (51.7)

Description

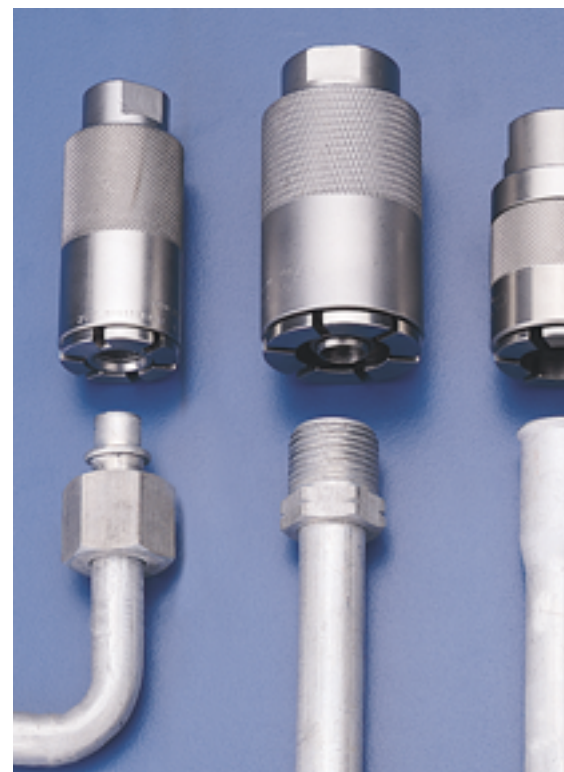
Connectors for a Variety of Tube Features

The **70 Series** connectors have a sliding sleeve and threaded collet design for instantly sealed connections from vacuum to 750 psi.

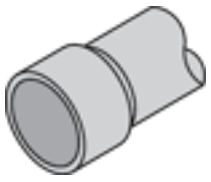
The design incorporates an internal piston that seals the mating part and enhances the seal as pressure increases.

Connections are made with a simple push and snap motion.

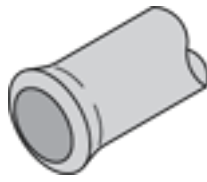
The internal sealing piston provides a straight through flow for minimal restriction and pressure loss. Standard products are manufactured in



stainless steel with Buna N seals. Other seal materials and custom designs are available for all your applications.



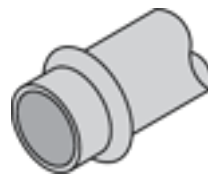
Expanded Tubes



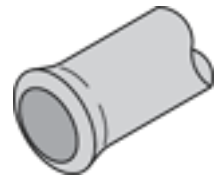
Flared Tubes



Barbed Tubes



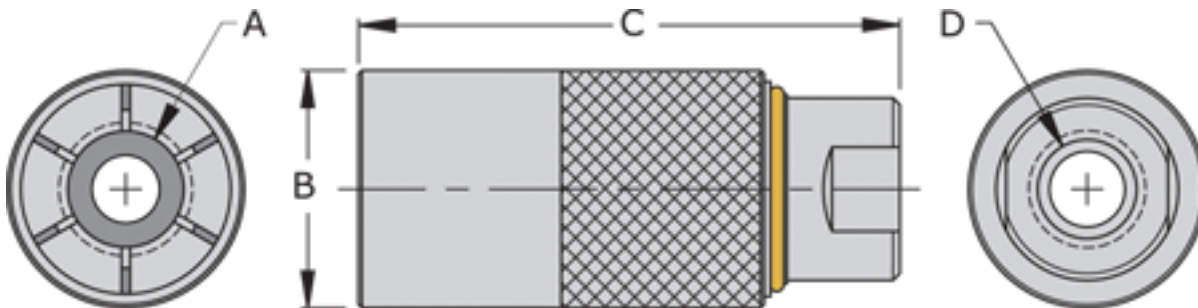
Beaded Tubes



Formed End Tubes

- Connect to fittings, expanded, flared, barbed, beaded and formed end tubes
- Instant connections from vacuum to 750 psi eliminate tape, sealant, wrenches and part damage
- High flow design for short filling and testing times
- Rugged stainless steel housing
- -40°F to +250°F operating temperature

Specification



Body Size	Range OD - Dim A	Dim B	Dim C	Dim D
1	Up to 0.32" (8.2)	0.87 (22.1)	2.95 (75.0)	1/8" NPT
2	0.32 to 0.43 (8.2 - 11.0)	0.99 (25.2)	2.95 (75.0)	1/8" NPT
3	0.43 to 0.59 (11.0 - 15.0)	1.19 (30.3)	2.95 (75.0)	1/4" NPT
4	0.59 to 0.79 (15.0 - 20.1)	1.38 (35.1)	3.15 (80.1)	3/8" NPT
5	0.79 to 0.98 (20.1 - 24.9)	1.58 (40.2)	3.15 (80.1)	1/2" NPT

6	0.98 to 1.18 (24.9 - 30.0)	1.78 (45.3)	3.54 (90.0)	3/4" NPT
7	1.18 to 1.42 (30.0 - 36.1)	1.97 (50.1)	3.54 (90.0)	3/4" NPT
8	1.42 to 1.65 (36.1 - 42.0)	2.17 (55.2)	3.54 (90.0)	3/4" NPT
9	1.65 to 1.85 (42.0 - 47.0)	2.36 (60.0)	3.54 (90.0)	1" NPT
10	1.85 to 2.04 (47.0 - 51.9)	2.76 (70.2)	3.54 (90.0)	1-1/4" NPT

Note: Dimensions are in inches (mm).

Material: Stainless steel

Instructions

Click on the document below to view or download the appropriate operating and maintenance instructions for the 70 Series connectors from **FasTest**.

Proper use of the connectors will ensure safe operation and maximum connector life.

- 70 Series Operating and Maintenance Instructions
- 70 Series Operating and Maintenance Instructions (Chinese)
- 70 Series Rebuild Instructions

CADModels

How to Order:

The **70 Series** connectors are designed for mechanical gripping on a feature of the test piece and pressure enhanced sealing.

Connectors are designed, engineered and manufactured to your specific application requirements.

For part number and a price quotation:

- 1) Identify the gripping and sealing areas of your test piece.
- 2) Contact **FasTest** with information on test pressure, media and provide detailed drawing, including tolerances of test piece.
- 3) Two sample parts will be required at the time of order for final design and testing purposes.